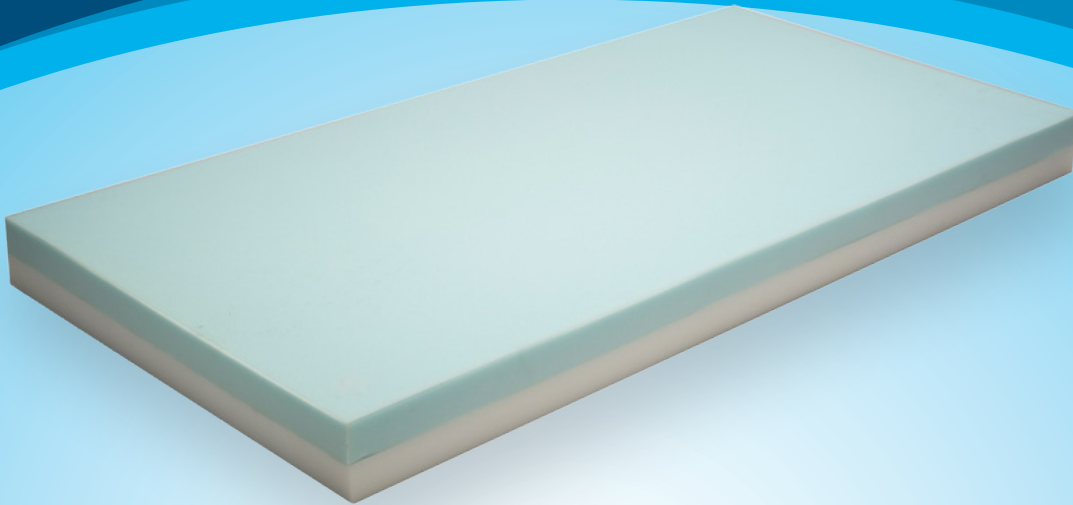


Protekt® 600

Bariatric Pressure Redistribution Foam Mattress



FEATURES AND BENEFITS:

- Top-layer of high resilient high density foam provides optimal support and comfort for your Bariatric patients.
- Foam bottom layer is made of ultra high density high resilient foam which provides unprecedented patient support and stability.
- Stretch nylon top cover reduces perspiration and provides a low shear friction surface that is anti-microbial and fluid resistant.
- 360 degree zipper for easy removal, cleaning or replacement.
- Anti-Contamination Flap covers the zipper reducing the possibility of fluids damaging the foam core.
- Bottom Cover: Triple laminate vinyl; fluid resistant; anti-microbial/anti-bacterial; fire retardant.
- Fire sleeve meets Federal Fire Code 16 CFR part 1633.
- Weight Capacity: Up to 1000 lbs.
- Warranty: Core; 1 Year Non-Prorated. Cover; 1 Year.
- Optional raised rails available on all sizes.

81061	Protekt® 600-42	42"x76"x6"
81062	Protekt® 600-42	42"x80"x6"
81063	Protekt® 600-42	42"x84"x6"
81064	Protekt® 600-48	48"x76"x6"
81065	Protekt® 600-48	48"x80"x6"
81066	Protekt® 600-48	48"x84"x6"
81067	Protekt® 600-54	54"x76"x6"
81068	Protekt® 600-54	54"x80"x6"
81069	Protekt® 600-54	54"x84"x6"



Streamline Medequip, LLC
www.streamlinemedequip.com
346-445-4017